



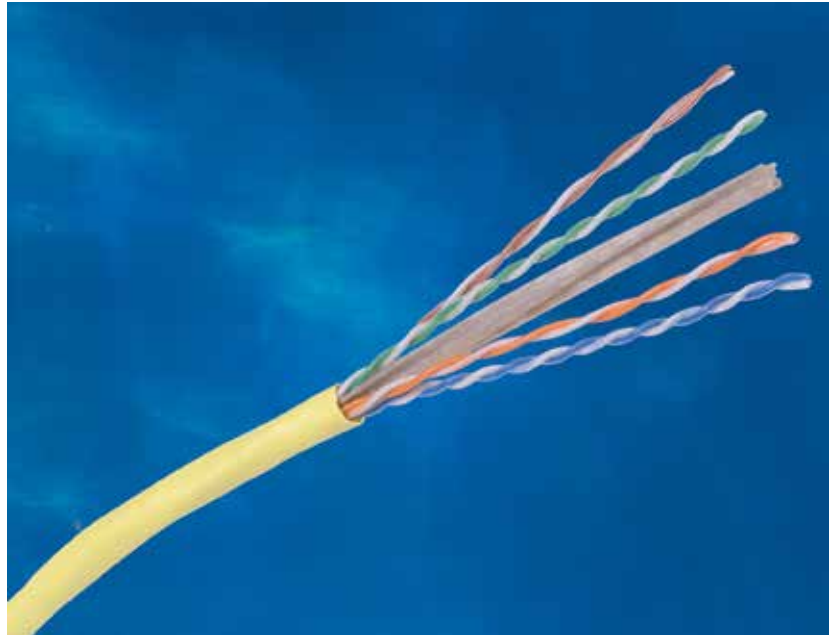
HUBBELL NextSpeed Link 6 Cable

Sweep Tested from 1-500 MHz.

Guaranteed Headroom Over TIA and ISO Category 6 Requirements.

Small O.D. Allows More Cables per Conduit/Pathway.

Backward Compatible to Category 5e, 5, and 3.



SPECIFICATIONS

- ◆ **Conductor:** 23 AWG solid bare copper.
- ◆ **Insulation:** CMP: FEP, CMR: Polyolefin.
- ◆ **Pairing**
 - 1: Blue + White/Blue
 - 2: Orange + White/Orange
 - 3: Green + White/Green
 - 4: Brown + White/Brown
- ◆ **Cabling:** Four unshielded twisted pairs cabled around a star filler member.
- ◆ **Jacket**
 - CMP: Low-Smoke PVC.
 - CMR: PVC.
- ◆ **NVP**
 - CMP: 70%
 - CMR: 68%

Hubbell's **NEXTSPEED**® Link 6 cable provides considerable margin above all electrical transmission performance requirements specified in TIA/EIA-568-C.2 and ISO/IEC 11801 (2nd edition) standards.

Configure Hubbell Premise Wiring's component compliant, high-performance **NEXTSPEED**® connectivity (jacks, panels, cords, blocks) with **NEXTSPEED**® Link 6 cable and the result is a cabling solution which provides optimum electrical performance capabilities of handling critical, high-bandwidth applications.

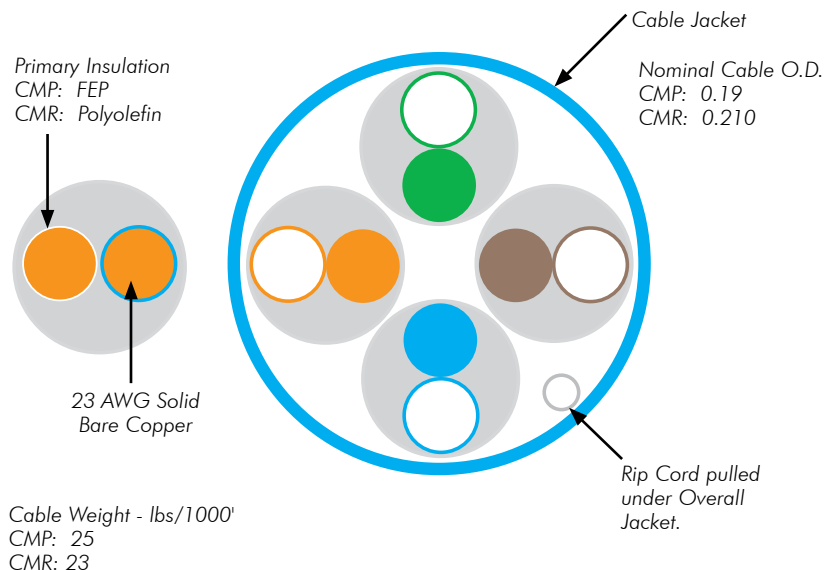
STANDARDS/VERIFICATIONS

- ANSI/TIA/EIA-568-C.2 Category 6 component specifications.
- IEEE 802.3af (PoE).
- UL Listed.
- NEC Article 800 compliant.

APPLICATIONS

- ▲ Ethernet: 10/100/1000BASE-T, 10GBASE-T (55m).
- ▲ Data centers: Multi-Gigabit between devices
 - Server to server
 - Server to storage
 - Server to switch
- ▲ PoE applications.
- ▲ Bandwidth intense processing:
 - High-resolution 3D modeling
 - On-line document publishing
 - Real-time video to the desktop
 - Broadband video
 - Digital video

CABLE FEATURES



ORDERING INFORMATION



NEXTSPEED® Category 6, 4-Pair, UTP Cable

	Catalog No. Riser	Catalog No. Plenum
Color	REELEX*	REELEX*
Blue	C6RREB	C6RPEB
Gray	C6RREGY	C6RPEGY
White	C6RREW	C6RPEW
Yellow	C6RREY	C6RPEY

* REELEX is licensed and patented by Windings Inc.

RELATED PRODUCTS

NEXTSPEED® Jacks, Category 6

Order Information

Catalog No. **HXJ6XX**

XX = Color:

- BK'** = Black;
- B'** = Blue;
- EI'** = Electric Ivory;
- GL'** = Gold;
- GY'** = Gray;
- GN'** = Green;
- OW'** = Office White;
- OR'** = Orange;
- P'** = Purple;
- R'** = Red;
- TI'** = Telco Ivory;
- W'** = White;
- Y'** = Yellow.



NEXTSPEED® Patch Panel, Category 6

Order Information

Description	Catalog No.
Protected PCB	P6EXXU
Universal Angled	P6XXVU
Non-Protected PCB	P6XXU

XX = Ports

'24' = 24-port, 1.75"H

'48' = 48-port, 3.50"H

'96' = 96-port, 7.00"H



P6E48U

See page Full Line Catalog page for product options: color, size, length.

NEXTSPEED® Patch Cords, Category 6

Order Information

Catalog No. **PCX6XX***

XX = Standard Color:

- "BK" = Black; "B" = Blue; "GY" = Gray;
- "Y" = Yellow

* = Standard Length:

"03" = 3'; "06" = 6'; "08" = 8'; "10" = 10';

"12" = 12'; "16" = 16'; "20" = 20';



PCX6B03

TRANSMISSION SPECIFICATIONS - Worst Case

TIA/EIA-568-C.2 Category 6 Compliant; ISO/IEC 11801, 2nd ed. Category 6 Compliant

Freq. (MHz)	Ins. loss (dB/100m)	NEXT (dB/100m)	PSNEXT (dB/100m)	ACR (dB)	PSACR (dB)	ACRF (dB)	PSACRF (dB)	Return loss (dB)
1	2.2	74.4	72.5	72.2	70.4	67.9	64.9	20.2
4	3.9	65.5	63.4	61.7	59.7	52.7	52.9	23.2
8	5.4	60.8	58.7	55.4	53.2	46.8	46.8	24.6
10	6.2	59.5	57.5	53.4	51.5	44.9	44.9	25.2
16	7.7	56.3	54.4	48.7	46.7	40.5	40.6	25.1
31.25	10.8	51.7	50.0	41.3	39.3	34.8	34.8	23.7
62.5	15.6	47.5	45.5	32.2	30.2	28.9	28.8	21.6
100	19.7	44.5	42.4	24.4	22.6	24.9	24.9	20.2
200	29.2	39.9	37.8	10.7	8.9	18.9	18.8	18.1
250	32.7	38.5	36.4	5.7	3.6	16.9	16.9	17.4
300*	36.5	37.0	35.3	-	-	15.2	15.4	16.9
350*	39.6	36.2	34.2	-	-	13.8	13.8	16.4
400*	43.1	36.5	33.5	-	-	12.9	12.9	15.8
500*	48.8	33.9	31.7	-	-	10.9	10.9	15.1
555*	52.2	33.2	31.2	-	-	9.8	10.0	14.8

* Frequencies beyond the TIA and ISO requirements are for information only.



www.hubbell-premise.com



Hubbell Premise Wiring • Hubbell Incorporated (Delaware) • 23 Clara Drive • Suite 103 • Mystic, CT 06355 • Phone (800) 626-0005 • FAX (860) 535-8328
 Printed in U.S.A. Specifications subject to change without notice.

® is a registered trademark of Hubbell Incorporated.

PLDCA009 11/13